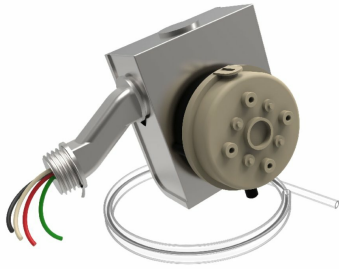


# DB10 Pressure Switch Kit

Item #: 95902



## Description

Automatic pressure switch allows for fully automatic operation of an inline duct fan for supply or exhaust air ventilation systems. The switch senses positive, negative or differential air pressure and activates or deactivates the fan. Fan runs for 10 minutes when pressure is sensed in the duct line then shuts off and turns on again as needed. Automatic pressure switch allows for fully automatic operation of an inline duct fan for supply or exhaust air ventilation systems. The switch senses positive, negative or differential air pressure and activates or deactivates the fan. Fan runs for 10 minutes when pressure is sensed...

[Find more details in our online catalogue](#)

## Technical parameters

Nominal data	
Voltage (nominal)	120 V
Phase(s)	1~
Input current	3.8 A
Dimensions and weights	
Weight	2 lb
Optional	
Media temperature	-40 to 190 °F
Timing range	10 min
Lifetime	100,000 cycles
Overpressure	14 in.wg

## Documents

[414538 DB10 OIPM EN.PDF](#)  
[DB10\\_WIRING\\_DIAGRAM.PDF](#)