

# DBF 4XLT Duct Booster Fan

Item #: 40275

Variante: 120V 1~ 60Hz



## Description

DBF 4XLT is a duct booster fan designed for boosting air on demand. The product is equipped with 5 feet cord, indicator panel to indicate status of product operation and pressure-sensing switch that activates the fan once positive pressure is sensed in the duct line. The switch shuts the fan off when the pressure in the duct's normalized.

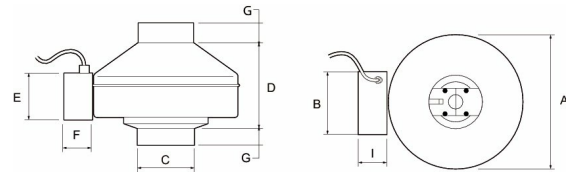
The DBF 4XL features a galvanized metal housing, pressure-sensing switch, indicator panel and a 5 feet cord for 120V/1~ connection. Suitable for 4" ductwork.

Performance certified by HVI; safety certified by ETL to UL507.

## Technical parameters

Nominal data	
Voltage (nominal)	120 V
Frequency	60 Hz
Phase(s)	1~
Input power	72 W
Input current	0.73 A
Impeller speed	2,559 r.p.m.
Air flow	max 173.0 cfm
Temperature of transported air	max 140 °F
Max temperature of transported air, when speed controlled	140 °F
Protection/Classification	
Enclosure class, motor	IP44
Insulation class	B
Dimensions and weights	
Duct dimension; Circular, inlet	4 in.
Duct dimension; Circular, outlet	4 in.
Weight	7.7 lb
Optional	
Duct connection type	Circular

## Dimensions



Model	A	B	C	D	E	F	G	H	I
DBF	9 3/4	3 3/4	3 7/8	6 15/16	3 7/8	2	1	3	2
4XLT	(248)	(95)	(98)	(176)	(98)	(5 1)	(2 5)	(7 6)	(5 1)

Dimensions are in inches (mm)

## Accessories

- DBLT4W Secd Lint Trap (46000)
- HS 4W External Louver Exhaust (45151)

## Documents

- DBF4XLT Submittal Sheet EN.pdf
- 401456 DBF4XLT OIPM EN.pdf
- 40275.dxf