

SER 200 Fresh Air Appliance

Item #: 99226

Variant : 120V 1~ 60Hz



Description

- Airflow up to 187 cfm @ 0.4" Ps serves 2 to 5 bedroom homes
- Removable screw terminal for easy connection
- Compatible with Fantech's low-voltage controls
- Three speed ventilation control
- Washable electrostatic filters
- Optional drain line
- Anti-microbial material
- Withstands freezing
- AHRI certified (energy recovery core)

Application

Fantech's SER 200 is an Energy Recovery Ventilator designed for higher static pressure applications.

How it works

The unit brings a continuous supply of fresh air into a home while exhausting an equal amount of contaminated air. The energy recovery core at the center of the unit transfers...

[Find more details in our online catalogue](#)

Technical parameters

Product	
Voltage (nominal)	120 V
Frequency	60 Hz
Phase(s)	1~
Input power	240 W
Input current	2.3 A
Air flow	max 186 cfm
Static pressure	0.4 in.wg
Certificate	CSA
Exchanger	
Exchanger type	Energy recovery (synthetic)
Dimensions and weights	
Weight	50.7 lb
Used for	
Installation placement	Vertical

Performances

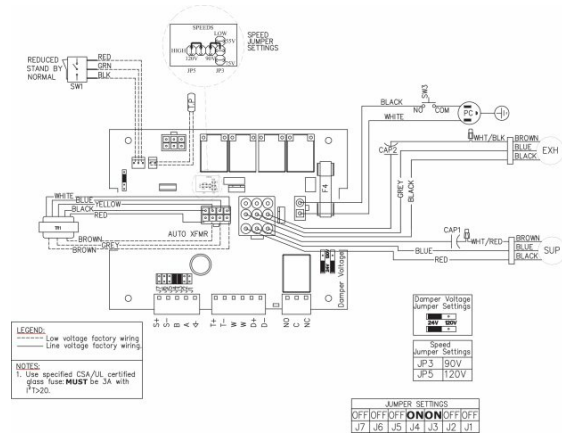
	Speed	Supply Temperature		Net Airflow		Consumed Power W	Net Effectiveness		
		°F	°C	cfm	L / s		Sensible %	Latent %	Total %
Heating	Low	35	1.7	100	47	146	74	59	69
	Medium	35	1.7	150	71	200	70	52	63
	High	35	1.7	200	94	253	66	46	59
Cooling	Low	95	35	100	47	146	74	55	63
	Medium	95	35	150	71	200	70	48	56
	High	95	35	200	94	253	66	42	52

Dimensions



Dimensional information is in inches (mm)

Wiring



Accessories

ADC 6 Shut-off Damper w Motor (44967)
 ECO-Feel (414729)
 FIDT 6 Insulated Flex Duct (411064)
 MDEH1 Low Voltage Dehumidistat (40172)
 MGS 6 Metal Supply Grill (411242)

COM6P Supply and Exhaust Hoods (40222)
 ECO-Touch® IAQ (414727)
 Filter_MERV8_200 cfm_Repl.kit (414922)
 MGE 6 Metal Exhaust Grill (411371)

Documents

427768 SER200 SPEC SHEET EN.PDF
 E400023 SHR200(R)-SER200 DIMENSIONAL SUBMITTAL.PDF
 427787 SER200 IOM EN FOLDER.PDF
 SER200 SERVICE MANUAL.PDF